

IdeaPad Gaming Chromebook (16", 7) and IdeaPad 5i Chromebook (16", 7) User Guide



Read this first

Before using this documentation and the product it supports, ensure that you read and understand the following:

- *Safety and Warranty Guide*
- *Setup Guide*
- [Generic Safety and Compliance Notices](#)

First edition (May 2022)

© Copyright Lenovo 2022.

LIMITED AND RESTRICTED RIGHTS NOTICE: If data or software is delivered pursuant to a General Services Administration "GSA" contract, use, reproduction, or disclosure is subject to restrictions set forth in Contract No. GS-35F-05925.

Contents

Read this first.	i	Connect to Wi-Fi	10
Discover your Chromebook	ii	Use the keyboard shortcuts	10
Chapter 1. Meet your Chromebook	1	Use the touchpad	11
Front	1	Connect to an external display	12
Base	2	Set the power plan	13
Left	3	Chapter 3. Help and support	15
Right	4	Frequently asked questions	15
Bottom	5	Lenovo Customer Support Center	15
Features and specifications	6	Get help from Google	16
Statement on USB transfer rate	7	Appendix A. Open source	
Operating environment	7	information.	19
Chapter 2. Get started with your		Appendix B. Notices and	
Chromebook	9	trademarks.	21
Charge your Chromebook.	9		
Lock your Chromebook.	9		

Discover your Chromebook

Thank you for choosing a Lenovo® Chromebook™! We are dedicated to delivering the best solution to you.

Before starting your tour, please read the following information:

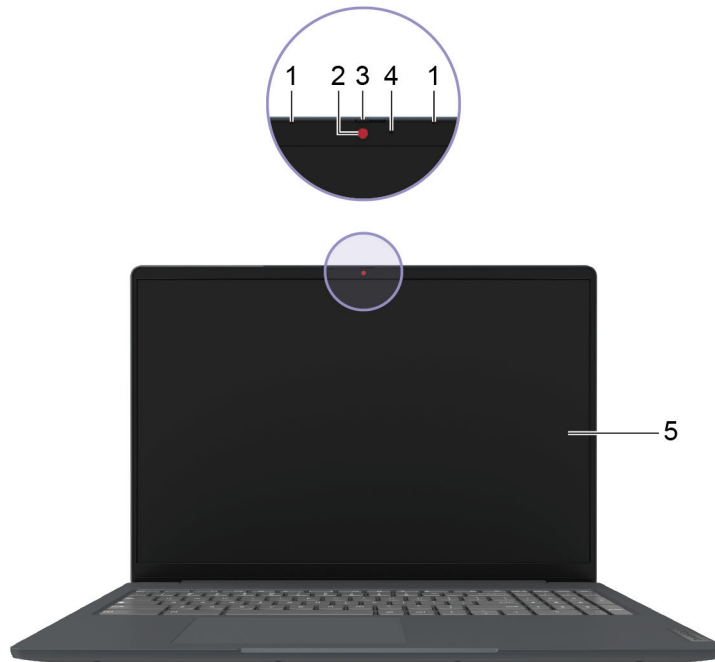
- This guide applies to Lenovo product model(s) listed below. Illustrations in this guide may look slightly different from your product model.

Model name	Machine type (MT)
IP 5 Chrome 16IAU7	82V8, 82V9

- For further compliance information, refer to the *Generic Safety and Compliance Notices* at https://pcsupport.lenovo.com/docs/generic_notices.
- Depending on the model, some optional accessories, features, software programs, and user interface instructions might not be applicable to your Chromebook.
- Documentation content is subject to change without notice. To get the latest documentation, go to <https://pcsupport.lenovo.com>.

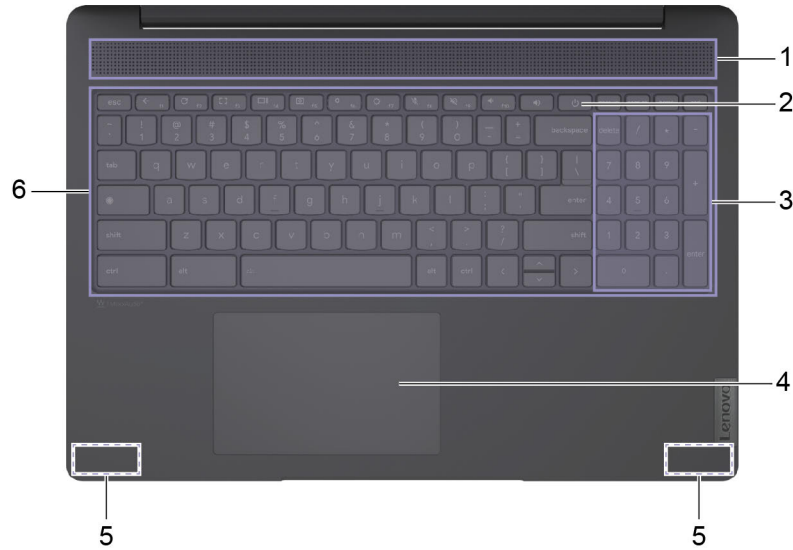
Chapter 1. Meet your Chromebook

Front



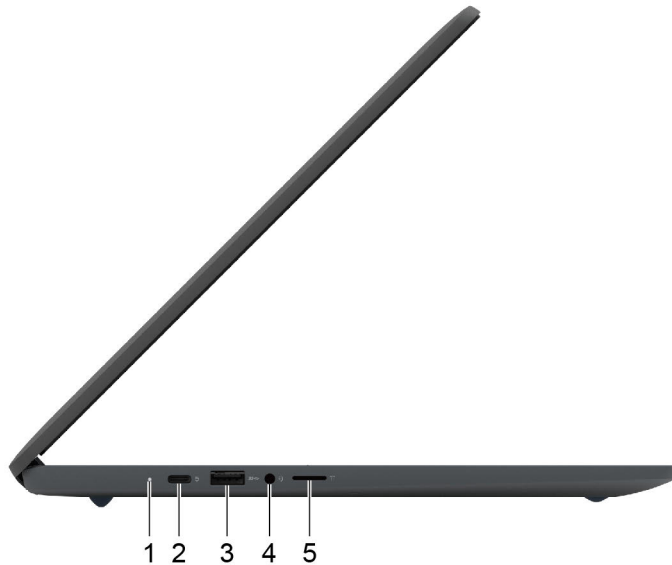
1. Microphones	Capture or record sound and voice.
2. Camera	Capture still and moving images for taking photos, recording videos, and video conferencing.
3. Camera cover slider	Move the slider to cover or uncover the camera lens. Note: The camera cover helps you better protect your privacy.
4. Camera light	If the light is on, the camera is in use.
5. Screen	Display text, graphics, and videos.

Base



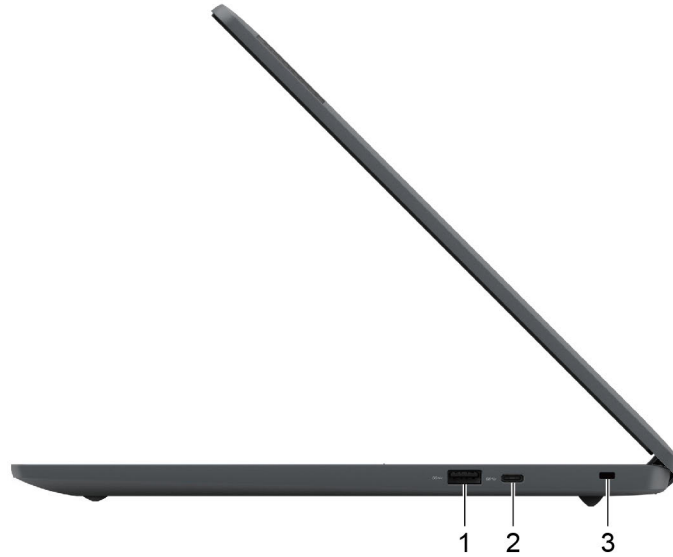
1. Speakers	Produce sound.
2. Power button	Press the button to turn on the Chromebook or put the Chromebook into sleep mode.
3. Numeric keypad	To enable or disable the numeric keypad, press the Num Lock key. Note: If the Num Lock key light is on, the numeric keypad is in use.
4. Touchpad	Perform finger touch and all the functions of a traditional mouse. Note: The touchpad also supports multi-touch function.
5. Wireless antennas	Send and receive radio waves for the built-in wireless LAN (local area network) and Bluetooth module. Note: The antennas are not visible from the outside of the Chromebook.
6. Keyboard	Enter characters and interact with programs. Note: The keyboard also includes hotkeys and function keys for changing settings and performing tasks quickly.

Left



1. Charging light	Indicate whether the Chromebook is connected to ac power. <ul style="list-style-type: none">• Solid white: connected to ac power; battery capacity 91%–100%• Solid amber: connected to ac power; battery capacity 1%–90%• Off: not connected to ac power
2. USB-C® connector/Power connector	<ul style="list-style-type: none">• Connect external display, storage, or data devices. <p>Note: An appropriate adapter may be needed for connecting external devices.</p> <ul style="list-style-type: none">• Connect to power with the included power cord and ac power adapter.
3. USB 3.2 Gen 1 port	This USB port utilizes the USB Standard-A connector. Connect a USB-compatible device, such as a USB keyboard, a USB mouse, a USB storage device, or a USB printer.
4. Combo audio jack	Connect headphones or headsets with a 3.5 mm (0.14 inch), 4-pole plug. <p>Note: This jack does not support standalone external microphones. If you use headsets, choose one with a single plug.</p>
5. microSD card slot	Insert a microSD card into the slot for data transfer or storage.

Right



1. USB 3.2 Gen 1 port

This USB port utilizes the USB Standard-A connector. Connect a USB-compatible device, such as a USB keyboard, a USB mouse, a USB storage device, or a USB printer.

2. USB-C connector

- Connect external display, storage, or data devices.

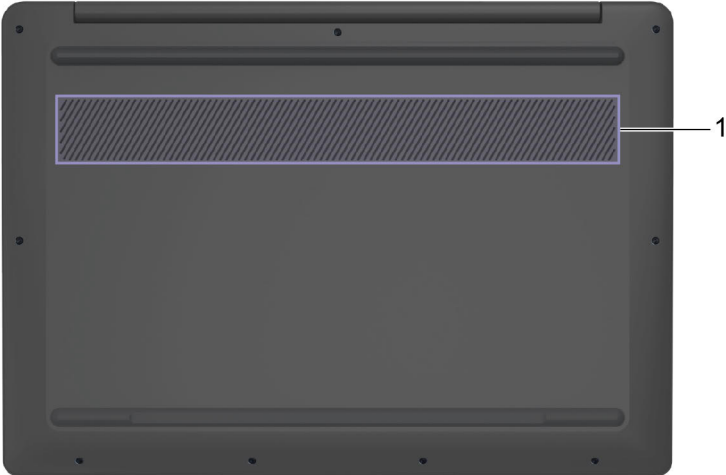
Note: An appropriate adapter may be needed for connecting external devices.

- Connect to power with the included power cord and ac power adapter.

3. Nano security-lock slot

Lock your Chromebook to a desk, table, or other fixtures through a compatible security cable lock. See “Lock your Chromebook” on page 9.

Bottom



1. Ventilation slots

Dissipate heat.

Features and specifications

Note: Specifications might change without notice. Some specifications are model-specific and might not apply to the Chromebook model that you purchased.

Dimensions	Approximately 356.5 mm × 253 mm × 19.95 mm (14.04 inches × 9.96 inches × 0.79 inches)
ac power adapter	<ul style="list-style-type: none">• Input: 100 V –240 V , 50 Hz–60 Hz• Output: 15 V• Power: 45 W
Battery pack	<ul style="list-style-type: none">• Capacity: 71 Wh• Number of cells: 4• Type: Built-in Li-Polymer battery <p>Note: The battery capacity is the typical or average capacity as measured in a specific test environment. Capacities measured in other environments may differ but are no lower than the rated capacity (see product label).</p>
Memory	<ul style="list-style-type: none">• Type: On-board Low Power Double data rate 4x (LPDDR4x)• Capacity: 4GB or 8 GB
Storage device	<ul style="list-style-type: none">• Type: Embedded multi media card (eMMC)• Capacity: 64 GB or 128 GB• Type: Solid-state drive (SSD)• Capacity: 256 GB or 512 GB <p>Note: The capacity of the storage device displayed in the operating system is typically lower than the nominal capacity.</p>
Screen	<ul style="list-style-type: none">• Size: 406.4 mm (16 inches)• Display resolution:<ul style="list-style-type: none">– 1920 × 1200 pixels*– 2560 × 1600 pixels

Connectors and slots

- Combo audio jack
 - USB Standard-A connector × 2
 - USB-C connector × 2
 - Power input up to 45 W using the included power adapter
 - Power output up to 5 V and 3 A
- Note:** If one USB-C connector is in use and provides power output up to 5 V and 3 A, the maximum power output of the other USB-C connector is 5 V and 1.5 A.
- USB data transfer rate up to 10 Gbps for USB 3.2 Gen 2
 - DisplayPort™ 1.4. Supports maximum output resolution of 5120 × 3200, at 60 Hz frame rate and color depth of 24 bpp (bits per pixel).
- microSD card slot

Note: Data rates and performance ratings are dependent on connected devices and cables if they are used. For DisplayPort connection through a USB-C port, the listed maximum output capacity is only available on external displays with a DisplayPort, a Mini DisplayPort, or a USB-C port that supports DisplayPort Alternate Mode. For connections using a converter or an adapter, the actual output resolution may be lower.

Security	Nano security-lock slot
----------	-------------------------

- | | |
|-------------------|------------------------------------------------------------------------------------|
| Wireless features | <ul style="list-style-type: none">• Bluetooth• Wireless LAN |
|-------------------|------------------------------------------------------------------------------------|
-

- | | |
|--------|--------------------------------------------------------------------------------------------------|
| Others | <ul style="list-style-type: none">• Camera• Microphone• Speakers |
|--------|--------------------------------------------------------------------------------------------------|
-

* for selected models

Statement on USB transfer rate

Depending on many factors such as the processing capability of the host and peripheral devices, file attributes, and other factors related to system configuration and operating environments, the actual transfer rate using the various USB connectors on this device will vary and will be slower than the data rate listed below for each corresponding device.

USB device	Data rate (Gbit/s)
3.2 Gen 1	5
3.2 Gen 2	10

Operating environment

Maximum altitude (without pressurization)

3048 m (10 000 ft)

Temperature

- Operating: 5°C to 35°C (41°F to 95°F)
- Storage: 5°C to 43°C (41°F to 109°F)

Note: When you charge the battery, its temperature must be no lower than 10°C (50°F).

Relative humidity

- Operating: 8% to 95% at wet-bulb temperature 23°C (73°F)
- Storage: 5% to 95% at wet-bulb temperature 27°C (81°F)

If possible, place your Chromebook in a well-ventilated and dry area without direct exposure to sunshine.

Chapter 2. Get started with your Chromebook

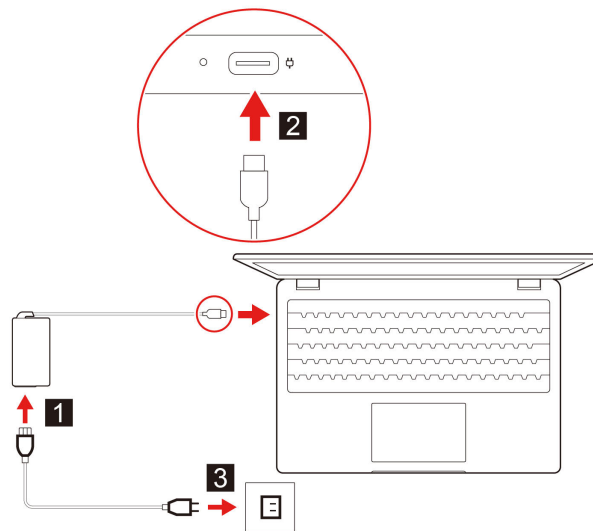
Charge your Chromebook

The USB-C connector on your Chromebook works as the power connector. Plug in the ac power adapter to charge the built-in battery pack and provide power to the Chromebook.

Connect to ac power

CAUTION:

All plugs must be firmly and securely inserted into receptacles.



1. Connect the power cord to the ac power adapter.
2. Plug the power adapter into the USB-C connector of the Chromebook.
3. Plug the power cord into an electrical outlet.

AC power status indicator behavior

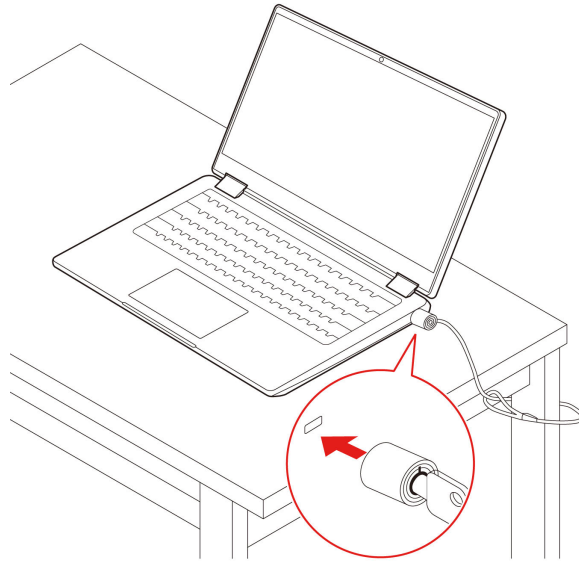
The ac power status indicator is next to the USB-C connector. The following table shows the indicator behaviors and the indicated power and battery status.

AC power status indicator	Power status	Battery status
on (red)	plugged in	being charged, remaining power is less than 5%
on (amber)	plugged in	being charged, remaining power is between 5% and 97%
on (green)	plugged in	fully charged (97% to 100%)
off	unplugged	discharging

Lock your Chromebook

Lock your Chromebook to a desk, table, or other fixtures through a compatible security cable lock.

Note: The slot supports cable locks that conform to the Kensington NanoSaver® lock standards using Cleat™ locking technology. Do not attempt to use other types of cable locks that use a rotating T-bar™ locking mechanism. You are responsible for evaluating, selecting, and implementing the locking device and security feature. Lenovo makes no comments, judgments, or warranties about the function, quality, or performance of the locking device and security feature. Cable locks for your product are available from Lenovo at <https://www.lenovoquickpick.com/>.



Connect to Wi-Fi



To connect your Chromebook to Wi-Fi:

1. Click your account picture.
2. Click the network icon and turn on the wireless feature.
3. Select an available network to connect. Provide required information if needed.




Use the keyboard shortcuts

The function keys on the keyboard help you work more easily and effectively.

←	Go to the previous page
↻	Reload your current page
☐	Hide the tabs and the App Launcher in full-screen mode
☐	Show all windows in overview mode
☐	Drag an area and capture
⚙️	Decrease the brightness of the Chromebook screen
⚙️	Increase the brightness of the Chromebook screen
🔇	Mute the microphone
🔇	Mute the speakers

	Decrease the volume
	Increase the volume

Your Chromebook also supports some key combinations.

ctrl + 	Take a screenshot
alt + 	Switch the Caps Lock function
 + L	Lock your Chromebook screen
ctrl + alt + ?	View all keyboard shortcuts

To change the keyboard settings:

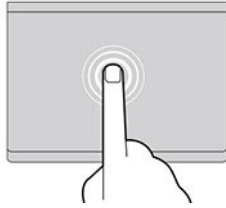
1. Click the setting icon in the system tray, and then click **Device → Keyboard**.
2. Follow the on-screen instructions to change the settings as you prefer.

Use the touchpad

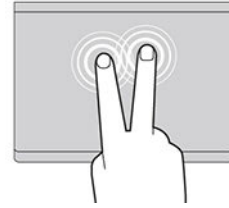
You can use the touchpad to perform various touch gestures. The following section introduces some frequently used touch gestures, such as tapping, dragging, and scrolling.

Notes:

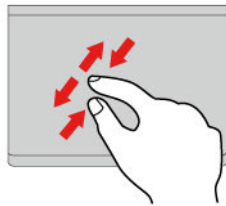
- When using two or more fingers, ensure that you position your fingers slightly apart.
- Some gestures are only available when you are using certain apps.
- If the touchpad surface is stained with oil, turn off the Chromebook first. Then, gently wipe the touchpad surface with a soft and lint-free cloth moistened with lukewarm water or Chromebook cleaner.



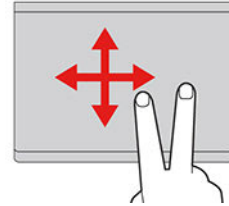
Tap once to select or open an item.



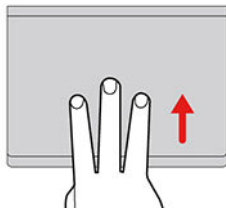
Tap twice quickly to display a shortcut menu.



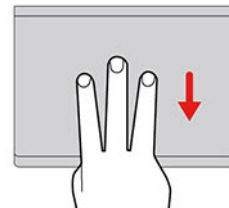
Two-finger zoom in or zoom out.



Scroll through items.



Open the task view.



Show the current window.

To change the settings:

1. Click the setting icon in the system tray, and then click **Device → Touchpad**.
2. Follow the on-screen instructions to change the settings as you prefer.

If **Enable tap-to-click** is turned on, you can tap or press the touchpad. Otherwise, you can only press the touchpad to achieve the clicking function of a traditional mouse.

Connect to an external display

You can use the Chromebook's USB-C connectors to connect a projector or an external display.

1. Use a USB-C to USB-C cable (not supplied) to connect your Chromebook to an external display.

Note: If the external display does not support input through USB-C connector, you may need to purchase and use adapters. Lenovo provides various USB-C accessories at <https://www.lenovo.com/accessories>, to help you expand your Chromebook functionality.

2. Connect the external display to an electrical outlet.
3. Turn on the external display.

To change display settings:

1. Click your account picture, and then click **Settings**.
2. In the **Device** section, click **Displays**.
3. Follow the on-screen instructions to change the display settings as you desire.

Set the power plan

For ENERGY STAR® compliant Chromebooks, the following power plan takes effect when your Chromebooks have been idle for a specified duration:

Table 1. Default power plan (when plugged into ac power)

- | |
|------------------------------------------------------------------------------------------------------------------------------------------------------|
| <ul style="list-style-type: none">• Turn off the display: After 7.5 minutes• Put the Chromebook into sleep: After 8.5 minutes |
|------------------------------------------------------------------------------------------------------------------------------------------------------|

To reset the power plan to achieve the best balance between performance and power saving:

1. Click the setting icon in the system tray, and then click **Device → Power**.
2. Follow the on-screen instructions to change the settings as you prefer.

Chapter 3. Help and support

Frequently asked questions

What do I do if my Chromebook stops responding?

1. Press and hold the power button until the Chromebook turns off. Then, restart the Chromebook.
2. If step 1 does not work:
 - For models with an emergency reset hole: Insert a straightened paper clip into the emergency reset hole to cut off power supply temporarily. Then, restart the Chromebook with ac power connected.
 - For models without an emergency reset hole:
 - For models with the removable battery, remove the removable battery and disconnect all power sources. Then, reconnect to ac power and restart the Chromebook.
 - For models with the built-in battery, disconnect all power sources. Press and hold the power button for about seven seconds. Then, reconnect to ac power and restart the Chromebook.

What do I do if I spill liquid on the Chromebook?

1. Carefully unplug the ac power adapter and turn off the Chromebook immediately. The more quickly you stop the current from passing through the Chromebook the more likely you will reduce damage from short circuits.
Attention: Although you might lose some data or work by turning off the Chromebook immediately, leaving the Chromebook on might make your Chromebook unusable.
2. Do not try to drain out the liquid by turning over the Chromebook. If your Chromebook has keyboard drainage holes on the bottom, the liquid will be drained out through the holes.
3. Wait until you are certain that all the liquid is dry before turning on your Chromebook.

How do I disinfect my Chromebook?

1. Squeeze out excess liquid from wipe or disinfecting cloth before using. Recommended wipes are hydrogen peroxide wipes and alcohol based wipes. Do not use wipes containing sodium hypochlorite (bleach).
2. Gently wipe the Chromebook thoroughly, being careful to ensure no liquid drips into the Chromebook. Do not wipe on connector pins.
3. After disinfecting, follow the cleaning procedure from the wipe supplier to minimize chemical buildup of disinfectant residue.
4. Always allow the Chromebook to completely dry prior to any use.

For more information about cleaning and disinfecting, go to <https://support.lenovo.com/in/en/solutions/ht035676>.

How do I find accessibility information?

<https://www.lenovo.com/accessibility>

Lenovo Customer Support Center

If you have tried to correct the problem yourself and still need help, you can call Lenovo Customer Support Center.

Before you contact Lenovo

Record product information and problem details before you contact Lenovo.

Production information	Problem symptoms and details
<ul style="list-style-type: none">• Product name• Machine type and serial number	<ul style="list-style-type: none">• What is the problem? Is it continuous or intermittent?• Any error message or error code?• What operating system are you using? Which version?• Which software applications were running at the time of the problem?• Can the problem be reproduced? If so, how?

Note: The product name and serial number can usually be found on the bottom of the Chromebook, either printed on a label or etched on the cover.

Telephone numbers

For a list of the Lenovo Support phone numbers for your country or region, go to <https://pcsupport.lenovo.com/supportphonenumber> for the latest phone numbers.

Note: Phone numbers are subject to change without notice. If the number for your country or region is not provided, contact your Lenovo reseller or Lenovo marketing representative.

Services available during the warranty period

- Problem determination - Trained personnel are available to assist you with determining if you have a hardware problem and deciding what action is necessary to fix the problem.
- Lenovo hardware repair - If the problem is determined to be caused by Lenovo hardware under warranty, trained service personnel are available to provide the applicable level of service.
- Engineering change management - Occasionally, there might be changes that are required after a product has been sold. Lenovo or your reseller, if authorized by Lenovo, will make selected Engineering Changes (ECs) that apply to your hardware available.

Services not covered

- Replacement or use of parts not manufactured for or by Lenovo or nonwarranted parts
- Identification of software problem sources
- Configuration of UEFI BIOS as part of an installation or upgrade
- Changes, modifications, or upgrades to device drivers
- Installation and maintenance of network operating systems (NOS)
- Installation and maintenance of programs

For the terms and conditions of the Lenovo Limited Warranty that apply to your Lenovo hardware product, go to:

- https://www.lenovo.com/warranty/llw_02
- <https://pcsupport.lenovo.com/warrantylookup>

Get help from Google

After signing in to your Chromebook, start Get Help from the app Launcher. The Get Help app provides comprehensive instructions on using your Chromebook.

In addition, if you are interested in visiting the Chromebook Help Center and Community, go to <http://support.google.com/chromebook>.

Appendix A. Open source information

Your Chromebook may include software made publicly available by Google and other third parties, including software licensed under the General Public License and/or the Lesser General Public License (the “open source software”).

You may obtain a copy of the corresponding source code for any such open source software licensed under the General Public License and/or the Lesser General Public License (or any other license requiring us to make a written offer to provide corresponding source code to you) from Lenovo for a period of three years without charge except for the cost of media, shipping, and handling, upon written request to Lenovo. This offer is valid to anyone in receipt of this device. You may send your request in writing to the address below accompanied by a check or money order for \$5 to:

*Lenovo Legal Department
Attn: Open Source Team / Source Code Requests
8001 Development Dr.
Morrisville, NC 27560*

As part of your request, please include a “UNAME” and a “CHROME VERSION” of this device available by typing: “Chrome://system” in a Chrome Browser’s address bar. Be sure to provide a return address.

The open source software is distributed in hope it will be useful, but WITHOUT ANY WARRANTY; without even the implied warranty of MERCHANTABILITY or FITNESS FOR A PARTICULAR PURPOSE. See for example the GNU General Public License and/or the Lesser General Public License for more information.

To view additional information regarding licenses, acknowledgments and required copyright notices for the open source software used in your device, type: “Chrome://credits” in the Chrome Browser’s address bar.

This device may include certain pre-installed application programs or pre-configured links for downloading application programs published by parties other than Lenovo. Such third-party application programs may include open source software made publicly available by the respective publishers of those application programs. You may obtain the corresponding source code for any such open source software directly from the publisher of the applicable application program, to the extent permitted under the relevant open source software license agreement. Additional information is provided by the publisher of each application program within the menu structure of its application program.

Appendix B. Notices and trademarks

Notices

Lenovo may not offer the products, services, or features discussed in this document in all countries. Consult your local Lenovo representative for information on the products and services currently available in your area. Any reference to a Lenovo product, program, or service is not intended to state or imply that only that Lenovo product, program, or service may be used. Any functionally equivalent product, program, or service that does not infringe any Lenovo intellectual property right may be used instead. However, it is the user's responsibility to evaluate and verify the operation of any other product, program, or service.

Lenovo may have patents or pending patent programs covering subject matter described in this document. The furnishing of this document does not give you any license to these patents. You can send license inquiries, in writing, to:

*Lenovo (United States), Inc.
8001 Development Drive
Morrisville, NC 27560
U.S.A.
Attention: Lenovo Director of Licensing*

LENOVO PROVIDES THIS PUBLICATION "AS IS" WITHOUT WARRANTY OF ANY KIND, EITHER EXPRESS OR IMPLIED, INCLUDING, BUT NOT LIMITED TO, THE IMPLIED WARRANTIES OF NON-INFRINGEMENT, MERCHANTABILITY OR FITNESS FOR A PARTICULAR PURPOSE. Some jurisdictions do not allow disclaimer of express or implied warranties in certain transactions, therefore, this statement may not apply to you.

Changes are made periodically to the information herein; these changes will be incorporated in new editions of the publication. To provide better service, Lenovo reserves the right to improve and/or modify the products and software programs described in the manuals included with your Chromebook, and the content of the manual, at any time without additional notice.

The software interface and function and hardware configuration described in the manuals included with your Chromebook might not match exactly the actual configuration of the Chromebook that you purchase. For the configuration of the product, refer to the related contract (if any) or product packing list, or consult the distributor for the product sales. Lenovo may use or distribute any of the information you supply in any way it believes appropriate without incurring any obligation to you.

The products described in this document are not intended for use in implantation or other life support applications where malfunction may result in injury or death to persons. The information contained in this document does not affect or change Lenovo product specifications or warranties. Nothing in this document shall operate as an express or implied license or indemnity under the intellectual property rights of Lenovo or third parties. All information contained in this document was obtained in specific environments and is presented as an illustration. The result obtained in other operating environments may vary.

Lenovo may use or distribute any of the information you supply in any way it believes appropriate without incurring any obligation to you.

Any references in this publication to non-Lenovo Web sites are provided for convenience only and do not in any manner serve as an endorsement of those Web sites. The materials at those Web sites are not part of the materials for this Lenovo product, and use of those Web sites is at your own risk.

Any performance data contained herein was determined in a controlled environment. Therefore, the result obtained in other operating environments may vary significantly. Some measurements may have been made on development-level systems and there is no guarantee that these measurements will be the same on generally available systems. Furthermore, some measurements may have been estimated through extrapolation. Actual results may vary. Users of this document should verify the applicable data for their specific environment.

This document is copyrighted by Lenovo and is not covered by any open source license, including any Linux® agreement(s) which may accompany software included with this product. Lenovo may update this document at any time without notice.

For the latest information or any questions or comments, contact or visit the Lenovo Web site:

<https://pcsupport.lenovo.com>

Trademarks

LENOVO and LENOVO logo are trademarks of Lenovo. ENERGY STAR is a registered trademark of the U.S. Environmental Protection Agency. Google and Chromebook are trademarks or registered trademarks of Google LLC. NanoSaver and Cleat are trademarks or registered trademarks of ACCO Brands. USB-C is a registered trademark of USB Implementers Forum. DisplayPort is a trademark of the Video Electronics Standards Association. Wi-Fi is a registered trademark of Wi-Fi Alliance. All other trademarks are the property of their respective owners.

Lenovo