

# CITIZEN



**CT-S651II**  
(Also available with a white case)

## Well protected

Front paper exit perfect for hospitality

### Greyscale Printing

Print up to 16 shades of grey to create clear yet subtle company logos on receipts and feint watermarks behind text.

### SpillShield™ design

Front exit and curved top case helps stop drinks and other liquids dripping inside the printer mechanism.

### Tool-free maintenance

The self-retracting cutter clears paper jams automatically. But should the long-life cutter need to be replaced, no tools are needed and it takes just 30 seconds to clip-in a new one

### Internal Power Supply

The CT-S651II offers an internal power supply as standard or powered USB options.

## CITIZEN CT-S651II

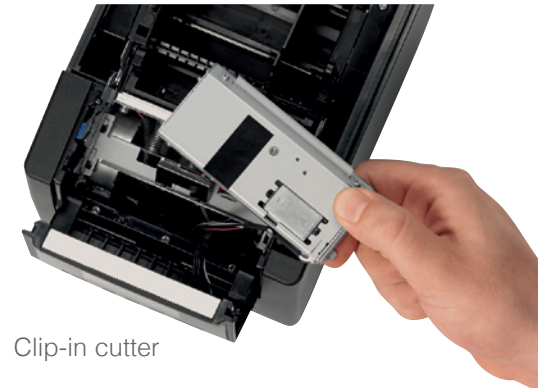
POS

### Applications

- Hospitality
- Receipts
- Kitchen Orders
- Restaurants and Bars
- Coupons
- Kiosks
- Ticketing



Front paper exit



Clip-in cutter

Hi end models of the CT-S800er series with top exit and LCD panel models also available



# CITIZEN

## Interface Options

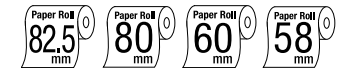
- USB
- Serial RS232
- Ethernet LAN
- Wireless LAN
- Bluetooth® (MFi)
- Powered USB
- USB with Hub
- Parallel



Exchangeable interfaces plus cash drawer kick-out

# CITIZEN CT-S651II

POS

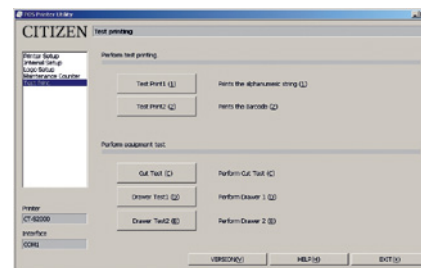
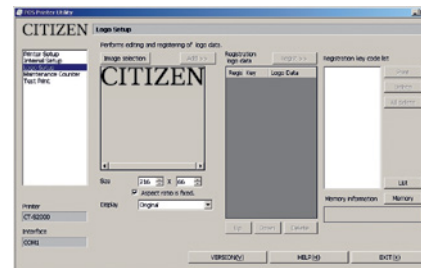
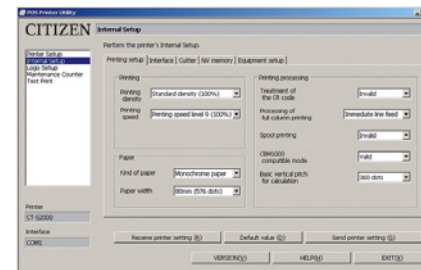


## Specifications

Model	CT-S651II	
Printing method	Line thermal dot printing	
Printing width	Max 80 mm: 80, 72, 68, 64, 54, 52, 48, 45mm selectable Max 640 dots: 640 to 360 dots	
Dot pitch	8 x 8 dots/mm (203 dpi)	
Printing speed	220 mm / second maximum (at 100% print darkness)	
Number of columns	82.5mm paper: Font A=53, font B=71 & font C=80 columns 80mm paper: 48, 64 & 72 58mm paper: 35, 46 & 52	
Character size	Font A: 1.50 x 3.00mm (12 x 24 dots), Font B: 1.13 x 2.13mm (9 x 17 dots), Font C: 1.00 x 2.00mm (8 x 16 dots)	
Character table	Alphanumeric, international, PC437, 850, 852, 857, 858, 860, 863, 864, 865, 866, WPC1252, katakana, Thai code 18	
Barcode type	UPC-A/E, JAN-13/8, Code 39, Code 128, CODABAR, Code 93, PDF417, QR Code	
Logo registration/print	384 KB (capable of storing user-defined characters and logos)	
Line spacing	4.23mm (1/6 inch), can be set by command	
Paper	Width	82.5mm / 80mm / 60mm / 58mm (all +0/-1mm)
	Roll size	Maximum 83mm diameter
	Thickness	65-75 µm (core OD 18mm) 75-150 µm (core OD 32mm)
	Recommended Paper	TF-50KS-E-2D from Nippon Paper, PD150R or PD160R from Ohji Paper, PA220AG, HP220A, HP220AB-1, F230AA, P220AB, or PB670 (2-color paper) from Mitsubishi Paper
Interface options	Serial, parallel (IEEE 1284), USB, USB with hub, Ethernet, Wireless LAN (Wifi), powered USB, Bluetooth®	
Input buffer	4K bytes/45 bytes	
Drawer kick-out	2 drawers	
Operation panel	3 LEDs (Power, Paper, Error) and Feed key	
Power supply	With AC adapter: 110 to 240 VAC, 50/60Hz. 3W in standby mode Output (or DC variant): 24VDC, 2.1A	
Weight	2.0 kg with internal AC adapter. 1.6 kg for DC version	
Dimensions (W x D x H)	145 (W) x 192 (D) mm. 148mm high with AC adapter. 120mm high DC version	
Operating environment	5 to 45°C, 10 to 90% RH (no condensation)	
Storage environment	-20 to 60°C, 10 to 90% RH (no condensation)	
Reliability	Print head: 150 Km or 200 million pulses. Cutter: 2 million cuts (With recommended papers and environmental conditions)	
EMC and safety standards	UL, C-UL, FCC Class A, TUV-Bauart, CE Marking, VCCI, CCC, BIS	
Warranty	2 years for printer and print head subject to normal usage conditions	

All product names are trademarks of the respective manufacturers. Epson® and ESC/POS™ are trademarks or registered trademarks of Seiko Epson Corporation. Bluetooth® is a registered trademark of the Bluetooth SIG and WiFi is the registered trademark of the Wi-Fi Alliance Designs, specifications and availability are subject to change without notice. Errors and omissions excluded.

## Customization Software



## Features & Benefits

- 220mm/sec high-speed printing
- 82.5, 80, 60 & 58 mm paper widths
- Easy, drop-in paper loading
- Auto retracting full & partial cutter
- Front paper exit
- Grayscale printing: 16 shades
- Tool-free cutter servicing
- Built-in buzzer
- Paper roll capacity Ø 83mm
- Exchangeable interface cards
- Built-in AC adaptor or DC & powered USB models
- Cash drawer kick-out
- Logo and font download and storage
- 1D and 2D internal barcodes
- ESC/POS™ compatibility
- Available in black or white
- Drivers, Layout Utilities and SDKs for Windows, Linux, macOS, Android, iOS, JavaPOS, OPOS and more